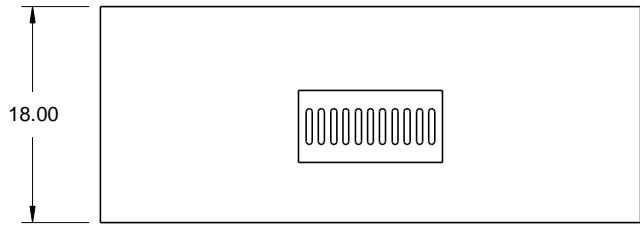
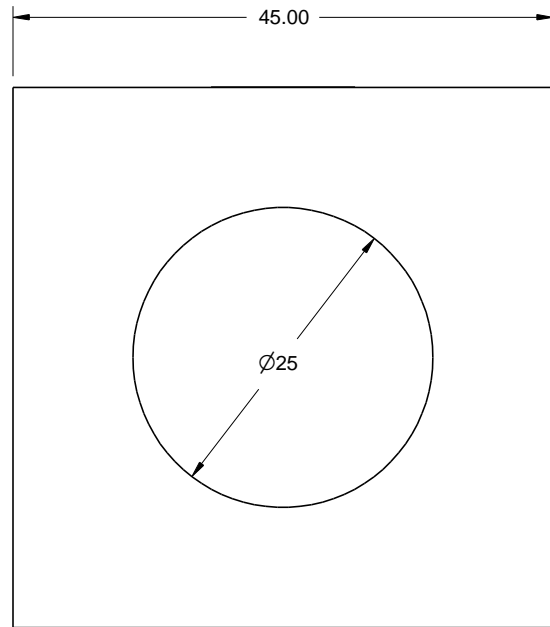
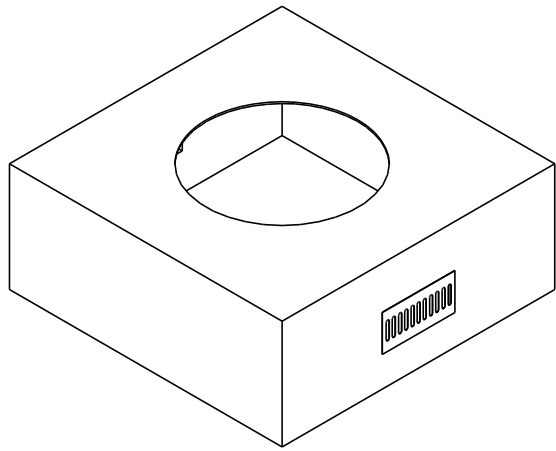




REVISIONS

ZONE	REV	DESCRIPTION	DATE	APPROVED
------	-----	-------------	------	----------



Material:

22G Galvanized Steel Structure
1/2" Hardiboard shell

Additional info:

Weighs 150 lbs.
Optional 19" cut out for
19" Pan
304 Stainless steel vents
Open bottom

Do not pre-cut surface material.
Only cut surface material after
enclosure is on-site. HPC is not
responsible for surface material that
cracks or fails due to heat.

DRAWN	DATE
Mike Chaffins	2/5/2015
CHECKED	
QA	
MFG	
APPROVED	

FPE45-SQUARE



Hearth Products Controls Co

SIZE	FSCM NO.	DWG NO.	REV
A			
SCALE			SHEET

