

Models:

GO24SP-NG or LP, GO30SP-NG or LP
 GO33SP-NG or LP, GO35SP-NG or LP, GO40SP-NG or LP
 GO24SP-REM-NG or LP, GO30SP-REM-NG or LP
 GO33SP-REM-NG or LP, GO35SP-REM-NG or LP,
 GO40SP-REM-NG or LP, GO24-IPI-NG or LP, GO30-IPI-NG or LP
 GO33-IPI-NG or LP, GO35-IPI-NG or LP, GO40-IPI-NG or LP




Grand Oak Gas Log Sets

Installation and service of this appliance should be performed by qualified personnel. Hearth & Home Technologies suggests NFI certified or factory-trained professionals, or technicians supervised by an NFI certified professional.





Check with your local building code agency before you begin installation to ensure compliance with local codes, including the need for permits and follow-up inspections. If you encounter any problems regarding code approvals, or if you need clarification of any of the instructions contained here, contact the Technical Services Dept., Hearth & Home Technologies Inc., 20802 Kensington Blvd., Lakeville, MN 55044, www.hearthnhome.com.

CAUTION




DO NOT DISCARD THIS MANUAL

- Important operating and maintenance instructions included.
- Read, understand and follow these instructions for safe installation and operation.
- Leave this manual with party responsible for use and operation.




⚠ WARNING




If the information in these instructions is not followed exactly, a fire may result causing property damage, personal injury, or death.

- Do not store or use gasoline or other flammable vapors and liquids in the vicinity of this or any other appliance.
- **What to do if you smell gas:**
 - Do not try to light any appliance.
 - Do not touch any electrical switch. Do not use any phone in your building.
 - Immediately call your gas supplier from a neighbor's phone. Follow the gas supplier's instructions.
 - If you cannot reach your gas supplier, call the fire department.
- Installation and service must be performed by a qualified installer, service agency, or the gas supplier.

⚠ WARNING



HOT! DO NOT TOUCH. SEVERE BURNS MAY RESULT. CLOTHING IGNITION MAY RESULT.



Glass and other surfaces are hot during operation and cool down.

- Keep children away.
- CAREFULLY SUPERVISE children in same room as appliance.
- Alert children and adults to hazards of high temperatures.
- Do NOT operate with protective barriers removed.
- Keep clothing, furniture, draperies and other combustibles away.

In the Commonwealth of Massachusetts:

- This appliance must be installed by a licensed plumber or gas fitter.
- The chimney flue damper, when used with gas logs, will be welded open or completely removed.
- A CO detector shall be installed in the room where the appliance is installed.

Note: An arrow (➡) found in the text signifies change in content.

**Read this manual before installing or operating this appliance.
Please retain this owner's manual for future reference.**

Congratulations

Congratulations on selecting a Hearth & Home Technologies gas log set—an elegant and clean alternative to burning wood. The Hearth & Home Technologies gas log set you have selected is designed to provide the utmost in safety, reliability, and efficiency.

As the owner of this new gas log set, you'll want to read and carefully follow all of the instructions contained in this owner's manual. Pay special attention to all cautions and warnings.

This owner's manual should be retained for future reference. We suggest you keep it with your other important documents and product manuals.

The information contained in this owner's manual, unless noted otherwise, applies to all models and gas control systems.


Your new gas log set will give you years of durable use and trouble-free enjoyment. Welcome to the Hearth & Home Technologies family of appliance products!

Homeowner Reference Information	<i>We recommend that you record the following pertinent information about your gas log set:</i>
Model Name: _____	Date purchased/installed: _____
Serial Number: _____	Location on appliance: _____
Dealership purchased from: _____	Dealer phone: _____
Notes: _____	

Listing Label Information/Location
The model information regarding your specific gas log set can be found on the rating plate.

Model #
Serial #
Gas Type

MODEL NO: INPUT RATING: MAX. INLET PRESSURE: inches W.C. MANIFOLD PRESSURE: inches W.C.	SERIAL NO: GAS TYPE:
--	---------------------------------------



OMNI-Test Laboratories, Inc.
HEARTH AND HOME TECHNOLOGIES
ANGIER, NC 27501

Design complies with ANSI Z21.60 b-2004 CSA 2.26 b-2004 decorative appliances for installation in solid-fuel burning fireplaces. The minimum inlet gas supply pressure for the purpose of input adjustment is 7 inches W.C. The minimum size fireplace opening is " W x " H x " D.

WARNING: For installation in a solid-fuel burning fireplace only. The fireplace chimney must have a permanent vent opening to the atmosphere of not less than square inches or as determined from the manufacturer's installation instructions.

WARNING: Improper installation, adjustment, alteration, service or maintenance can cause property damage, personal injury or loss of life. Refer to the owner's information manual provided with this appliance. Installation and service must be performed by a qualified installer, service agency or the gas supplier.

WARNING

Improper installation, adjustment, alteration, service or maintenance can cause injury or property damage. Refer to the owner's information manual provided with this appliance. For assistance or additional information consult a qualified installer, service agency or the gas supplier.

CAUTION



Sharp Edges

- Wear protective gloves and safety glasses during installation.



WARNING

**HOT! DO NOT TOUCH.
SEVERE BURNS MAY RESULT.
CLOTHING IGNITION MAY RESULT.**

Glass and other surfaces are hot during operation and cool down.

- Keep children away.
- CAREFULLY SUPERVISE children in same room as appliance.
- Alert children and adults to hazards of high temperatures.
- Keep clothing, furniture, draperies and other combustibles away.

A. Design and Installation Considerations

The Gas Log Hearth Kit consists of the following:

- Log Set
- Burner/Pan Assembly
- Grate Assembly
- Rock Wool
- Sand (NG only)
- Lava Rock
- Damper Stop
- Vermiculite
- Platinum Embers

- Review proper placement of logs, rockwool, lava rock and vermiculite.
- Check the wiring.
- Ensure there are no gas leaks.
- Ensure the flow of combustion and ventilation air is not obstructed (front grilles and vent caps).
- Before installing into a solid fuel burning fireplace, the chimney and firebox should be inspected and cleaned to remove soot, creosote, ashes, paint, bird nests etc.
- Annual examination of the chimney must be performed by a qualified agency to ensure proper ventilation of flue gases created by this appliance.

B. Tools and Supplies Needed

Tools and supplies normally required for installation:

Pliers
Phillips screwdriver
Tape measure
Crescent wrenches
Gas shutoff valve
Non-corrosive leak check solution
3/4 in. wrench, 7/16 in. wrench

C. Important!

- Do not remove any of the attached metal plates, which contain important safety and operating information.
- Keep the appliance area clear and free of all combustible materials, gasoline and other flammable vapors and liquids.
- Any safety screen or guard removed during servicing must be replaced before operation.
- **A qualified service technician must perform installation and repair.** The appliance should be inspected and cleaned annually by a qualified service technician. More frequent cleaning may be required due to excessive lint, dust, pet hair, etc. It is imperative that the control compartments, burners and air passageways are unobstructed during operation.



WARNING

**Fire Risk
Exhaust Fumes Risk**

- Do NOT use this appliance as a "vent-free" heater.

The flue must be permanently open according to Tables 1 and 2.

- Have the chimney and adjacent structure inspected and cleaned by qualified professionals. Hearth & Home Technologies recommends that NFI or CSIA certified professionals, or technicians under the direction of certified professionals, conduct a minimum of an **NFPA 211 Level 2** inspection of the chimney.
- Replace component parts of the chimney and fireplace as specified by the professionals.
- Ensure all joints are properly engaged and the chimney is properly secured.
- Do not allow fans to blow directly into the fireplace. Avoid any drafts that alter burner flame pattern.
- Do not use a blower insert, heat exchanger insert or other accessories not approved for use with this appliance.

- This appliance must have a screen in place while the appliance is in operation and, unless other provisions for combustion air are provided, the screen shall have an opening for introduction of combustion air.
- Solid fuels shall not be burned in a fireplace where a decorative appliance is installed.
- If glass doors are present, the **glass doors must be fully opened** while appliance is in operation.

⚠ WARNING

Do NOT use this appliance if any part has been under water. Immediately call a qualified service technician to inspect the appliance and to replace any part of the control system and any gas control which has been under water.

D. Appliance Certification

This appliance is design certified by Omni International under the **ANSI Z21.60b-2004 or CSA 2.26b-2004, Decorative Appliances for Installation in Solid-fuel Burning Fireplaces**. Installation and the provisions for combustion and ventilation air must conform to the **National Fuel Gas Code, ANSI Z223.1/NFPA 54**, or the **CSA B149.1, Natural Gas and Propane Installation Code**.

E. Gas Supply Connection

A 3/8 in. flared fitting has been installed on the gas valve inlet at the factory. Ensure fittings are of the appropriate size and type on the gas line connection. If the tubing has to be cut to length be sure to use the proper cutting and flaring tool. Also, be careful not to crimp the tubing while bending. If the tubing becomes crimped, do not use for installation.

Gas resistant pipe compound must be used on all threaded male connections to ensure a tight seal.

F. Gas Pressure

Proper input pressures are required for optimum appliance performance. Gas line sizing requirements need to be made following **NFPA51**.

⚠ WARNING



**Fire Risk
Explosion Risk**

- High pressure will damage valve.
- Disconnect gas supply piping **BEFORE** pressure testing gas line at test pressures above 1/2 psig.
 - Close the manual shutoff valve **BEFORE** pressure testing gas line at test pressures equal to or less than 1/2 psig.



⚠ WARNING

**Fire Risk
Explosion Risk**

- Verify inlet pressures.
- High pressure may cause overfire condition.
 - Low pressure may cause explosion.
- Install regulator upstream of valve if line pressure is greater than 1/2 psig.

- Gas Supply Pressure: Minimum inlet gas supply pressure must be 7.0 in. W.C. for natural gas or 11 in. W.C. for LP gas for the purpose of input adjustment. Maximum inlet gas pressure must not exceed 10.5 in. W.C. for natural gas or 13 in. W.C. for LP gas. The gas line supplying the appliance must be sufficient size to furnish the appropriate supply pressure to the appliance while operating in the “High” setting.
- Pressure tap screws must be closed before turning gas on to the appliance.
- Gas Line Pressure Test: Perform pressure test according to state and local code (if pressure exceeds 1/2 in. psi (3.5 kPa)) before appliance is connected. Be sure to release air pressure from the gas line before connection is made to the appliance. Excessive pressure will damage the gas control and may cause a gas leak.
- Gas Leak Test: Make sure the gas connections are tight. Turn on the gas and coat each joint with a non-corrosive gas leak check solution. Air bubbles will form indicating any leaks. DO NOT USE A FLAME OR ANY TYPE OF IGNITION SOURCE TO CHECK FOR LEAKS. All leaks must be corrected before proceeding with installation.
- The appliance must only be installed in a solid-fuel burning fireplace with the flue damper clamped open according to Tables 1 and 2. The fireplace must be constructed of non-combustible material.
- The minimum permanent free opening (in square inches) that must be provided by the fireplace chimney or damper to vent the flue gases is provided in Tables 1 and 2. If the free opening is smaller than the specified area, do not use this appliance.
- The damper must be removed or fixed in a manner in which will secure it open. Some jurisdictions require the damper to be removed or permanently welded fully open. Check with state and local codes.
- Be sure that the chimney is completely unobstructed to ensure proper ventilation of flue gases including carbon monoxide (CO). CO (a poisonous gas) is tasteless, odorless, colorless and undetectable without proper equipment.
- Refer to Table 3 to determine minimum fireplace opening requirements before proceeding.

G. Negative Pressure

Negative pressure results from the imbalance of air available for the fireplace to operate properly. Causes for this imbalance include:

- Exhaust fans (kitchen, bath, etc.).
- Range hoods.
- Combustion air requirements for furnaces, water heaters and other combustion appliances.
- Clothes dryers.
- Location of return-air vents to furnace or air conditioning.
- Imbalances of the HVAC air handling system.
- Upper level air leaks: recessed lighting, attic hatch opening, duct leaks.

WARNING



Asphyxiation Risk

This appliance produces carbon monoxide (CO).

- The free opening areas (in square inches) of the chimney damper as shown in the following tables must be met.
- User must make sure damper is locked open.
- The installer is responsible to ensure proper ventilation of flue gases before appliance is used.

Fire needs to draft properly for safe operation.

Table 1 for Factory Built Fireplaces

Free Opening Area (in square inches) of Chimney Damper for Venting combustion Products from Decorative Appliances for Installation in Solid Fuel Burning Fireplaces.

Chimney Ht. (Feet)*	GO33 LP Gas	GO 33 Natural Gas	GO 24 & 35 LP Gas	GO 24 & 35 Natural Gas	GO 30 & 40 LP Gas	GO 30 & 40 Natural Gas
10	35.3	not approved	35.3	not approved	44.2	not approved
15	26.4	38.5	26.4	38.5	32.2	45.4
20	22.1	31.2	22.1	31.2	26.4	37.4
25	18.1	27.3	18.1	27.3	22.9	31.2
30	17.3	24.6	17.3	24.6	20.4	28.3
35	15.9	22.1	15.9	22.1	18.9	25.5
40	15.2	20.4	15.2	20.4	18.1	23.8

Table 2 for Masonry Built Fireplaces

Free Opening Area (in square inches) of Chimney Damper for Venting combustion Products from Decorative Appliances for Installation in Solid Fuel Burning Fireplaces.

Chimney Ht. (Feet)*	GO33 LP Gas	GO 33 Natural Gas	GO 24 & 35 LP Gas	GO 24 & 35 Natural Gas	GO 30 & 40 LP Gas	GO 30 & 40 Natural Gas
6	49.2	64	49.2	64	56.6	71.4
8	45.5	59.7	45.5	59.7	52.4	66.9
10	41.7	54.3	41.7	54.3	48.2	60.2
15	37.7	48.8	37.7	48.8	43.2	54.1
20	34.3	44.4	34.3	44.4	39.8	49.1
30	31.2	40.3	31.2	40.3	35.9	44.5

* Height is measured from the hearth to the top of the chimney.
Minimum height is 6 ft.

Table 3 for Minimum Fireplace Dimensions

Log Set	Front Opening	Depth	Height	Rear Width	Natural BTU	Propane BTU
GO33	32 in.	23 in.	22 in.	21 in.	76,000	74,000
GO24	34 in.	20 in.	18 in.	22 in.	73,000	61,000
GO30	40 in.	20 in.	18 in.	29 in.	80,000	70,000
GO35	34 in.	23 in.	22 in.	22 in.	88,000	80,000
GO40	40 in.	23 in.	22 in.	29 in.	92,000	82,000

H. Inspect the Appliance and Components

- Remove the contents from the carton labeled “Burner”. Attached to the burner are tags identifying the manufacturer name, serial number, model number (including gas log size), BTU ratings, gas type, etc.
- Review the attached tags before proceeding. Ensure that all minimum fireplace dimension requirements are achieved using [Table 3](#). See Figure 1. Ensure the gas type provided in the fireplace coincide with the gas type marked on the tag.



Figure 1 Measure Firebox

- The burner is assembled with the controls installed at the factory and is designed to connect one end of the 3/8 in. supply line before placing inside the fireplace. Ensure the connection is tightened using a 3/4 in. wrench.
- Place the burner towards the rear and center of the fireplace and connect to the gas line. Follow instructions in “F. Gas Pressure” to check for gas leaks.
- During shipping and handling of this appliance the safety pilot control valve cover may not be in place. Once the burner is installed in the fireplace, be sure to place the cover over the valve to prevent overheating. See Figure 2.

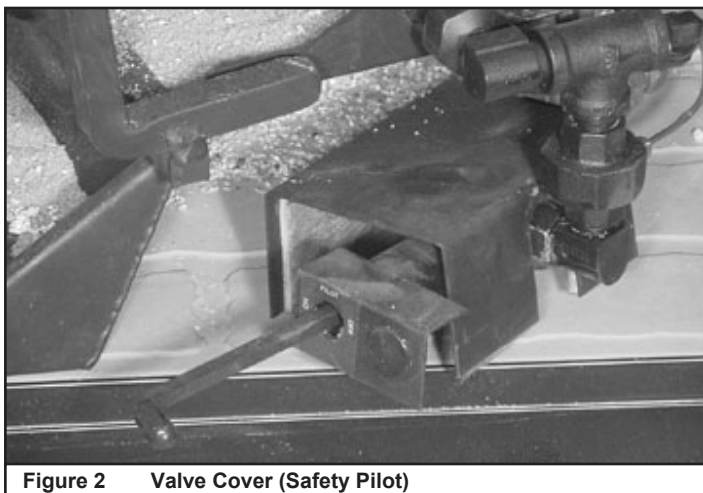


Figure 2 Valve Cover (Safety Pilot)

- IPI models include a battery box which holds 2 “D” size batteries. The battery box should be placed in the right front corner of your fireplace and covered with the log cover as shown in Figure 3.
- An On/Off switch is provided as part of the assembly. It is located on the front right side of the burner assembly as shown in Figure 3A.
- Optional remote control system can be incorporated with this system by connecting the remote system to the connection wires shown in Figure 3A.

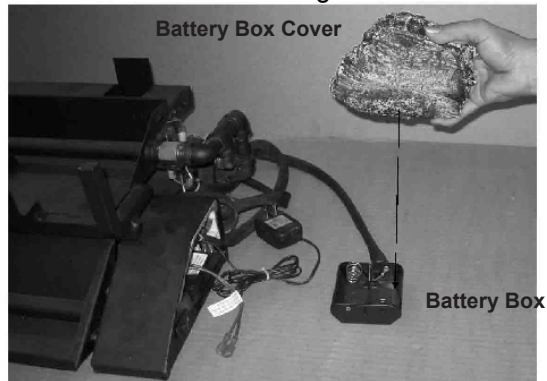


Figure 3 Battery Box and Cover (for IPI units only)

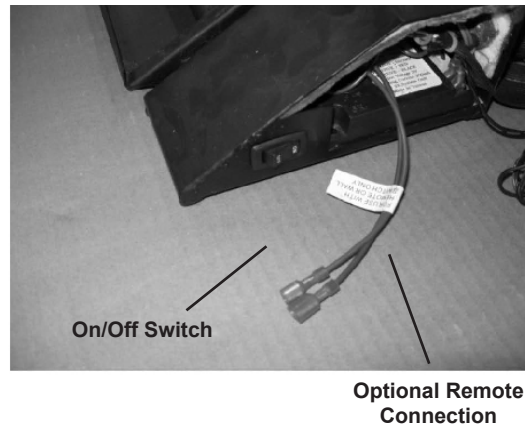


Figure 3A Control Box for IPI

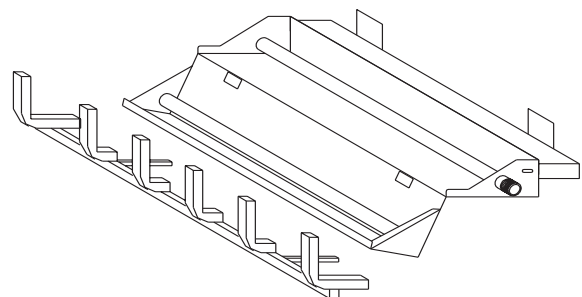


Figure 4 Placing Grate

- Install the grate by placing the inserts (attached to the grate) into the slots provided in the burner pan. Slide the inserts into the slots (Figure 4) and push the grate as far as possible to the locked position. GO 35 & GO 40 (not shown) grate installs in the same manner.
- For propane (LP) installations skip to “J for Propane Gas Installation”.

I. For Natural Gas Installation (for all units)

- Pour sand into the burner pans to the point where the burner pipe is covered. See Figure 5. Level the sand from right to left to ensure an even flame pattern. At this point the pan should be half full. Be sure not to cover pilot assembly.

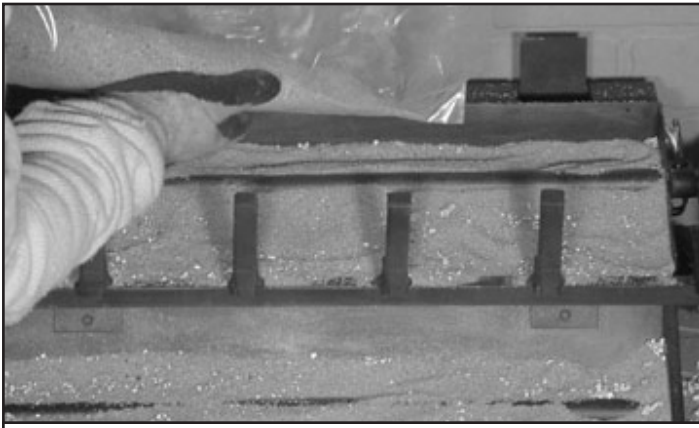


Figure 5 Sand

- Pour vermiculite over the sand in the pans until they are full. See Figure 6.



Figure 6 Placing Vermiculite

- Lightly place dime-size pieces of rock wool evenly on top of the sand and vermiculite to achieve a glowing ember effect. See Figure 7.

Note: For best results, do not pack down the rock wool. The placement of rock wool can have an effect on flame pattern and may need to be adjusted to achieve a desired appearance.



Figure 7 Placing Rock Wool

- **Inspect the pilot burner to ensure it is clear of any rock wool.**
- Remove the Platinum Bright Embers™ from the package. For optimum performance peel each piece apart in layers and lightly place on top of the vermiculite and rock wool where the flame is blue. This will achieve the desired realism.
- The gas burns at the point of the least resistance. In case of an uneven flame pattern it may be necessary to adjust the materials in the pans (using an object such as a screwdriver) to achieve the desired effect.
- Place desired amount of lava granules on the floor of the fireplace. **DO NOT ALLOW THE GRANULES TO COME IN CONTACT WITH THE FLAMES.** (Lava granules may contain moisture which, when heating, may cause it to pop out during installation and set-up.) Ensure the controls and switches are unobstructed after the granules are installed.
- Place logs. See Sections S thru Y.
- Place accent logs around burner on floor of fireplace.



⚠ WARNING





**Fire Risk
Explosion Risk
Personal Injury Risk**





Failure to position the parts in accordance with the diagrams provided with the log packages or failure to use only parts approved with this appliance may result in property damage or personal injury.

J. For Propane Gas Installation (for all units).

	WARNING Fire Risk Explosion Risk Personal Injury Risk
	An explosion could occur if a connection is made directly to an unregulated propane (LP) tank.

Pour vermiculite into each burner pan to the point where each pan is completely full. Level the vermiculite from right to left to ensure an even flame pattern. See Figure 6.

Note: Be sure to not cover the pilot assembly (located on the right side of the burner pan, installed in the vertical position) with vermiculite.

	WARNING Fire Risk Explosion Risk Personal Injury Risk
	Pour vermiculite into each burner pan (LP) to the point where each pan is completely full. Failure to do so may cause the lighting to be delayed and this can be dangerous..

- Lightly place dime size pieces of rock wool evenly on top of the vermiculite to achieve a glowing ember effect. See Figure 7.

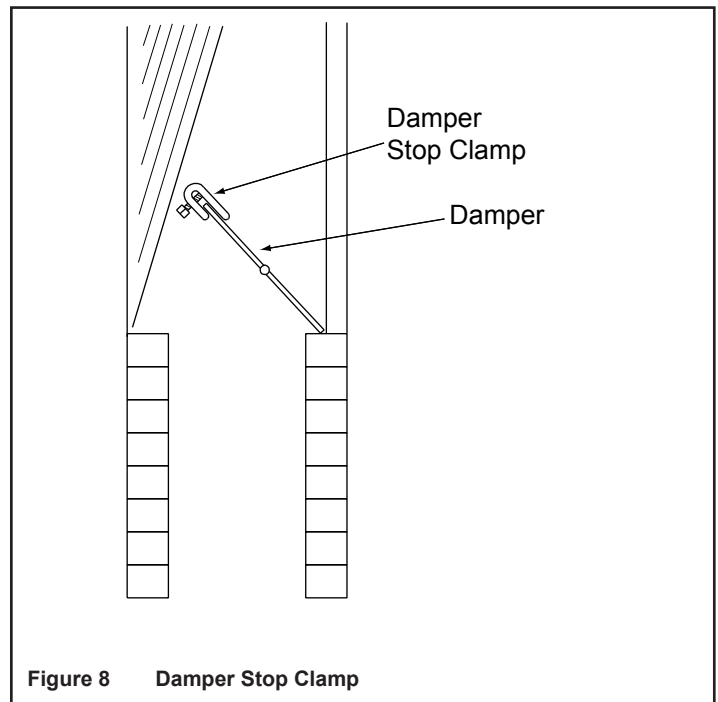
Note: For best results, do not pack down the rock wool. The placement of rock wool can have an effect on flame pattern and may need to be adjusted to achieve a desired appearance.

Note: The state of Massachusetts requires that the chimney flue damper, when used with gas logs, be welded open or completely removed. In the Commonwealth of Massachusetts this appliance must be installed by a licensed plumber or gasfitter.

- Inspect the pilot burner to ensure it is clear of any rock wool.**
- Remove the Platinum Bright Embers™ from the package. For optimum performance peel each piece apart in layers and lightly place on top of the vermiculite and rock wool where the flame is blue. This will achieve the desired realism.
- The gas burns at the point of the least resistance. In case of an uneven flame pattern it may be necessary to adjust the materials in the pans (using an object such as a screwdriver) to achieve the desired effect.
- Place desired amount of lava granules on the floor of the fireplace. **DO NOT ALLOW THE GRANULES TO COME IN CONTACT WITH THE FLAMES.** (Lava granules may contain moisture which, when heating, may cause it to pop out during installation and set-up.) Ensure that the controls and switches are unobstructed after the granules are installed. **DO NOT COVER THE AIR MIXER LOCATED ON THE LOWER LEFT SIDE OF THE BURNER.**
- Place logs as shown in Sections S thru Z.
- Place accent logs around burner on floor of fireplace.

K. Damper Stop Installation Instructions

Included in the burner assembly box is a damper stop clamp which attaches to the damper as shown (Figure 8). Install the clamp to the damper ensuring that the minimum requirements (Tables 1 and 2) are achieved. Use a 7/16 in. wrench to secure the clamp to the damper. If the damper clamp provided does not fit your application, other means of securing the proper opening must be provided by the installer.



L. Inspect the Venting System

The fireplace venting system is designed and constructed to develop a positive flow adequate to remove flue gases to the outside atmosphere. See fireplace installation instructions.

A spillage test must be made before the installed appliance is left with the consumer.

- Close all doors and windows in the home.
- Light the log set (see Lighting Instructions).
- After three minutes, test with a smoke match, smoke candle, stick incense or cigarette 1 in. below the top of the opening (lintel) moving across the full width. If spillage (smoke down into the room) occurs, it will most likely be near the top, outside corners.

Possible cures if spilling occurs:

- The damper needs to be opened further.
- The fireplace opening needs to be reduced by adding a drop panel across the top under the lintel.
- The air supply from outdoors needs to be increased. Open the outside air kit if the appliance is so equipped, or crack open a door or window.
- If necessary, seek expert advice. Do not operate this appliance.

Cleaning

- Periodic examination and cleaning of the venting system of the fireplace should be done before initial use and at least annually by a qualified agency.

M. Cleaning and Maintenance Instructions

Always remember:

- Do not place any combustible material near the appliance.
- Do not place any paper, trash or other material on the log set or in the fireplace.
- Do not touch any part of the appliance when it is in operation.
- Do not operate this appliance without the fireplace screen closed.

Your appliance is designed to be virtually maintenance free, although periodic visual inspection and cleaning is required. Follow the instructions below for the correct procedures. An annual examination and cleaning the venting system by a qualified person is also recommended.



CAUTION

- Logs can get very hot. Handle only when they are cool.

CAUTION

After burning, the logs become fragile. Take care in handling.

CAUTION

Before cleaning the appliance, be sure it is turned completely off. The pilot should also be turned off. The unit must be completely cooled.

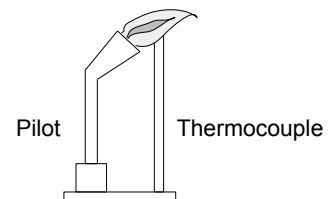
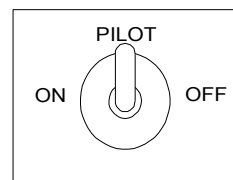
Do not allow soot to build up on the logs

Your logs require little care. Keep the burner assembly, logs and burner area surrounding the logs clean by brushing with a dry paint brush at least twice a year.

- Always turn off the gas to the pilot before cleaning. For relighting, refer to Section P Thru R. Lighting Instructions.
- Always keep the appliance clean and free from combustible materials, gasoline and other flammable vapors and liquids.
- Never obstruct the flow of combustion and ventilation air. Keep the front of the appliance clear of all obstacles and materials.
- Leave clearance of at least 36 in. from the front of the fireplace.

N. Safety Valve Pilot Flame Adjustment Instructions

The pilot flame adjustment screw is located on the front side of the pilot gas tubing port. Using a small straight blade screwdriver, turn the screw clockwise to adjust the pilot flame down and counterclockwise to adjust the flame up. This screw is sensitive; therefore it will not take much adjustment to accomplish this flame adjustment.



O. Frequently Asked Questions

Can I close the glass doors on my fireplace when using my gas logs?

No. The gas log sets are designed for use in fireplaces with all fireplace doors fully opened. Operating your log set with the doors closed will cause overheating, premature failure of valve systems, and will void the warranty of your log set.

What sort of maintenance do gas logs require?

Vented gas logs do not require regular maintenance. However, it is a good idea to have valves, pilots and gas connections on your set periodically inspected by a hearth professional. Although it is not required maintenance, annually refurbishing the ember material and periodic cleaning of the logs will help maintain your set's beauty and realism.

Why do I need a safety pilot control for my LP gas log set?

Since LP gas is heavier than air, it tends to gather or pool in low spots, rather than dissipating through the chimney flue. Furthermore, escaping LP gas can go unnoticed until a significant quantity has gathered, creating a potential hazard. Installation of a safety pilot control ensures that gas cannot accidentally pass through the burner when not operating, eliminating the risk of such an occurrence.

Does the ember material burn-up, and do I need to replace it periodically?

The ember material is a fireproof, organic mineral material called rock wool, and does not burn or require periodic replacement; however, annual refurbishment of the embers will help maintain the beauty and realism of your log set.

Can I burn real wood along with my gas logs?

No. The intense heat of a wood fire will damage your logs, burners, grates and valves, and will void your warranty.

Will gas logs help my chimney that drafts poorly?

No. Improper or poor draft will not be helped by gas logs. Please have your chimney inspected by a hearth professional or chimney sweep in order to determine how to correct the problem.

Can I close my fireplace damper to get more heat from my vented gas log set?

No. Vented gas logs are designed to be operated with the damper in the fully opened position. This gas log set produces carbon monoxide gas. The damper must be removed or clamped fully open using the "C" clamp provided with the set.

My gas logs make a whistling noise when I burn them. What causes this?

This behavior is normally caused by using a corrugated flex connector to hook up the gas log set. We recommend the installer use the supplied aluminum connector rather than the corrugated flexible type.

Can I move or change the position of the logs on my gas log set?

Omni certified log sets should not be altered - log placement must be exactly as indicated in the set's installation instructions.

Can I install my gas log set myself?

No. We recommend installation be performed by an NFI certified hearth professional, HVAC professional, gas fitter, or plumber experienced in gas log installation. Most localities require installation of any gas appliance to be performed by a professional. Please check with your local inspection agency/department.

What are the gas logs made of?

The gas logs are made of a mixture of pre-fired, expanded clay and a special high-temperature cement, with a wire mesh reinforcement. This combination creates a strong, ceramic material capable of withstanding extreme temperatures, yet also allows molding of the intricate detail found in these gas log sets.

I have a vented log set, and the logs have black soot on them. Is this normal?

Soot build-up on vented gas logs is a normal part of the combustion process. Natural gas log sets generally produce less soot than liquid propane log sets. We recommend any soot build up be removed periodically using a product designed for gas log soot removal.

Can I add a remote control to my log set after it has been installed?

You can easily add a remote to the gas log set if it is already equipped with a solenoid type valve or an IPI ignition system. In addition, vented sets without solenoid valves can also be converted to remote operation by adding, in the field, a solenoid type valve; however, a hearth professional must do this type of in-the-field modification.

Do I have to re-light the pilot light every time I use my log set?

No. You can light the pilot in the fall and leave it on throughout the winter, as the pilot is extremely clean burning and uses very little gas (approximately 1,500 BTU/hr.). The log set is equipped with a safety shut off device that will automatically shut the gas off if the pilot flame is extinguished.

Is the gas log set approved by a testing agency?

Yes. The GO series has been design certified by Omni under the **ANSI Z21.60-2004 Decorative Appliances for Installation in Solid Fuel Burning Fireplaces**. The installation and the provisions for combustion and ventilation air must conform to the **National Fuel Gas Code, ANSI Z223.1/NFPA 54**. Check with your local inspections department for further information.

P. Lighting Instructions

- Remote Ready Valve (REM)

FOR YOUR SAFETY READ BEFORE LIGHTING

WARNING! IF THESE INSTRUCTIONS ARE NOT FOLLOWED EXACTLY, A FIRE OR EXPLOSION MAY RESULT CAUSING PROPERTY DAMAGE, PERSONAL INJURY OR LOSS OF LIFE.

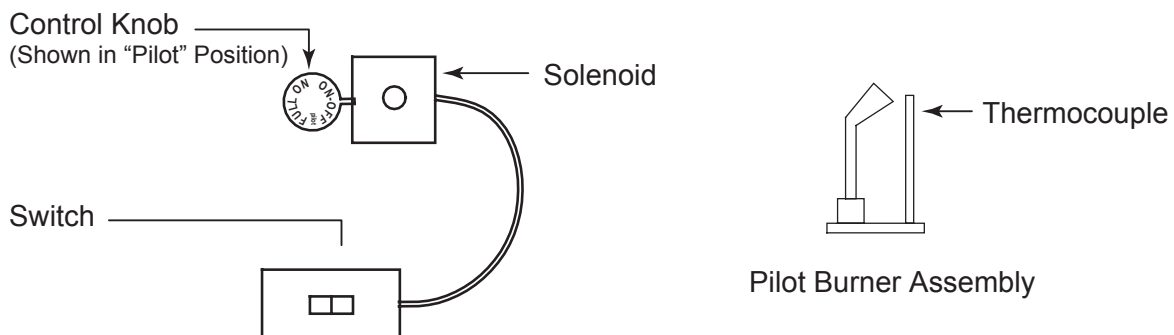
- This appliance has a pilot that must be lighted by hand. When lighting the pilot, follow these instructions exactly.
- BEFORE LIGHTING** smell all around the appliance area for gas. Be sure to smell next to the floor because some gas is heavier than air and will settle on the floor.
WHAT TO DO IF YOU SMELL GAS
 - Do not try to light any appliance.
 - Do not touch any electrical switch; do not use any phone in your building.
 - Immediately call your gas supplier from a neighbor's phone. Follow the gas supplier's instructions.
 - If you cannot reach your gas supplier, call the fire department.
- Use only your hand to push in or turn the gas control handle. Never use tools. If the handle will not push in or turn by hand, do not try to repair it. Call a qualified service technician. Force or attempted repair may result in fire or explosion.
- Do not use this appliance if any part has been under water. Immediately call a qualified service technician to inspect the appliance and to replace any part of the control system and any gas control that has been under water.

LIGHTING INSTRUCTIONS

- STOP!** Read the safety information previously listed above.
- Turn gas control handle clockwise ↻ to the "OFF" position.
- Wait 5 minutes to clear out any gas. Then smell for gas, including near the floor. If you smell gas, STOP! Follow "B" in the safety information above on this label. If you don't smell gas, go to the next step.
- Locate pilot (mounted on the right side of the top burner pan).
- Turn control handle counterclockwise ↻ to the "PILOT" position.
- Place a lit match at the pilot burner, and simultaneously push in on the control handle. This should ignite the pilot.
- Once the pilot lights, continue to depress the control handle for 1 minute.
- After 1 minute, slowly release control handle and it will pop back out. Pilot should remain lit. If it goes out, repeat Steps 1 through 7.
 - If the handle does not pop out when released, stop and immediately call your service technician or gas supplier.
 - If the pilot will not stay lit after several tries, turn the gas control handle to "OFF" and call your service technician or gas supplier.
- Turn gas control handle counterclockwise ↻ to "ON".

TO TURN OFF GAS TO APPLIANCE

Turn gas control handle clockwise ↻ to "OFF" position. Do not force.



Q. Lighting Instructions

- Safety Pilot Valve (STANDING PILOT VALVE)

FOR YOUR SAFETY READ BEFORE LIGHTING

WARNING: IF THESE INSTRUCTIONS ARE NOT FOLLOWED EXACTLY, A FIRE OR EXPLOSION MAY RESULT CAUSING PROPERTY DAMAGE, PERSONAL INJURY OR LOSS OF LIFE.

- A. This appliance has a pilot that must be lighted by hand. When lighting the pilot, follow these instructions exactly.
- B. **BEFORE LIGHTING** smell all around the appliance area for gas. Be sure to smell next to the floor because some gas is heavier than air and will settle on the floor.

WHAT TO DO IF YOU SMELL GAS

Do not try to light any appliance.




Do not touch any electrical switch: do not use any phone in your building.

Immediately call your gas supplier from a neighbor's phone. Follow gas supplier's instructions.

If you cannot reach your gas supplier, call the fire department.

- C. Use only your hand to push in or turn the gas control handle. Never use tools. If the handle will not push in or turn by hand, do not try to repair it. Call a qualified service technician. Force or attempted repair may result in fire or explosion.
- D. Do no use this appliance if any part has been under water. Immediately call a qualified service technician to inspect the appliance and to replace any part of the control system and any part of the gas control that has been under water.

LIGHTING INSTRUCTIONS

1. STOP! Read the safety information listed above.
2. Turn gas control handle clockwise  to the "OFF" position.
3. Wait 5 minutes to clear out any gas. Then smell for gas, including near the floor. If you smell gas, STOP!. Follow "B" in the safety information above. If you do not smell gas go on to next step.
4. Locate pilot (mounted on the right side of the top burner pan).
5. Turn control handle counterclockwise  to the "PILOT" position.
6. Place a lit match at the pilot burner and simultaneously push in on the control handle. This should ignite the pilot.
7. Once the pilot lights, continue to depress the control handle for 1 minute.
8. After 1 minute slowly release control handle and it will pop back out. Pilot should remain lit. If it goes out, repeat steps 1 through 7.
If the handle does not pop out when released, stop immediately and call your service technician or gas supplier.
If the pilot will not stay lit after several tries, turn the gas control handle to the "OFF" position and call your service technician or gas supplier.
9. Turn gas control handle counterclockwise  to the "ON" position.

TO TURN GAS OFF TO APPLIANCE

Turn gas control handle clockwise  to the "OFF" position. Do not force.



R. Lighting Instructions • IPI Pilot Valve (IPI)

FOR YOUR SAFETY READY BEFORE LIGHTING

WARNING: If you do not follow these instructions exactly, a fire or explosion may result causing property damage, personal injury or loss of life.

- A. This appliance is equipped with an intermittent Pilot ignition (IPI) device which automatically lights the burner. **DO NOT** try to light the burner by hand.
- B. **BEFORE LIGHTING**, smell all around the appliance area for gas. Be sure to smell next to the floor because some gas is heavier than air and will settle on the floor.

WHAT TO DO IF YOU SMELL GAS

Do not try to light any appliance.

Do not touch any electrical switch: do not use any phone in your building.

Immediately call your gas supplier from a neighbor's phone. Follow gas supplier's instructions.

If you cannot reach your gas supplier, call the fire department.

- C. Do not use this appliance if any part has been under water. Immediately call a qualified service technician to inspect the appliance and replace any part of the control system and any gas control which has been under water.

WARNING

DO NOT CONNECT 110 VAC TO THE CONTROL VALVE.

-Improper installation, adjustment, alteration, service or maintenance can cause injury or property damage.

-This appliance needs fresh air for safe operation and must be installed so there are provisions for adequate combustion and ventilation.

-If not installed, operated, and maintained in accordance with the manufacture's instructions, this product could expose you to substances in fuel or fuel combustion which are known to the State of California to cancer, birth defects or other reproductive harm.

-Keep burner and control compartment clean.

CAUTION

Hot while in operation. Do not touch. Keep children, clothing, furniture, gasoline and other liquids having flammable vapors away.

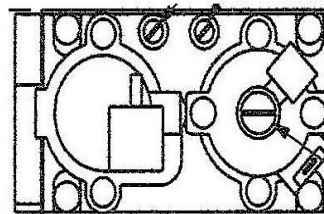
LIGHTING INSTRUCTIONS IPI

1. Turn off all electric power to the appliance.
2. This appliance is equipped with an ignition device which automatically lights the burner. **DO NOT** try to light the burner by hand.
3. Wait (5) minutes to clear out any gas. Then smell for gas, including near the floor. If you smell gas, **STOP!** Follow "B" in the Safety Information above. If you do not smell gas, go to the next step.
4. Turn on all electric power to the appliance.
5. To light the burner, flip the ON/OFF switch to the "ON" position (the ON/OFF switch may include a wall switch, if so equipped).
6. If the appliance will not operate, follow the instructions "To Turn Off Gas to Appliance" and call your service technician or gas supplier.

TO TURN OFF GAS TO APPLIANCE

1. Turn off all electric power to the appliance if service is to be performed.
2. Flip the ON/OFF switch to the "OFF" position.

Gas Valve

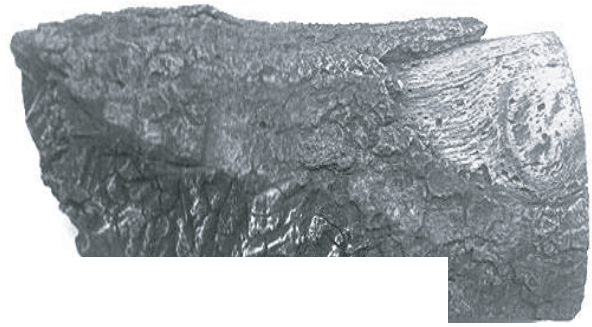


S. GO24 Grand Oak Series Logs

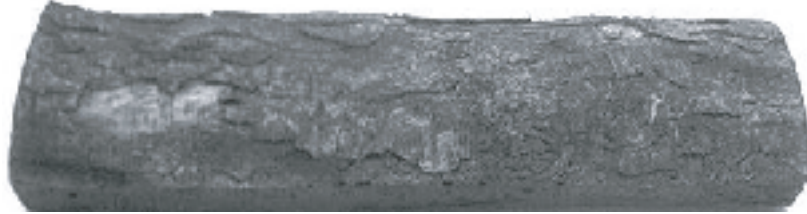
- Open the log box and remove the paper packaging and logs.
- Inspect each log for breakage that may have occurred during shipping and handling.



SRV736



SRV738



SRV737



SRV722



SRV723



SRV724



SRV728



SRV729



SRV749



SRV727



SRV743

T. GO24 Grand Oak Series Log Placement Instructions

- Place logs EXACTLY as the following photos depict.

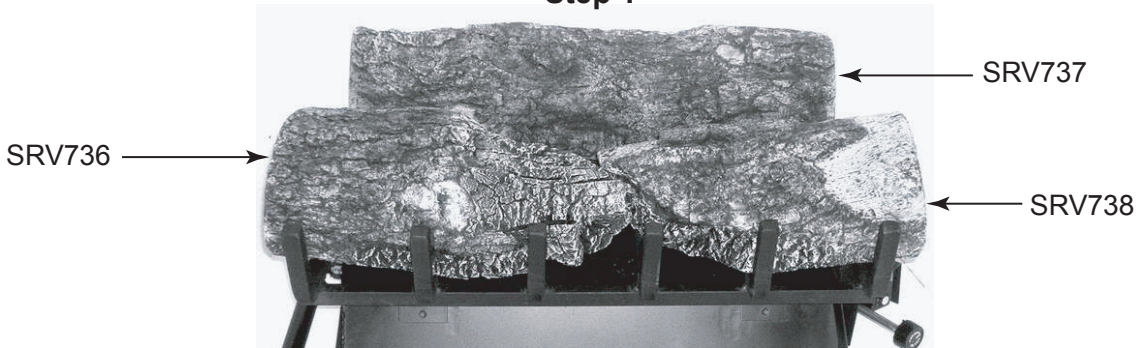
WARNING

Fire Risk
Explosion Risk
Personal Injury Risk

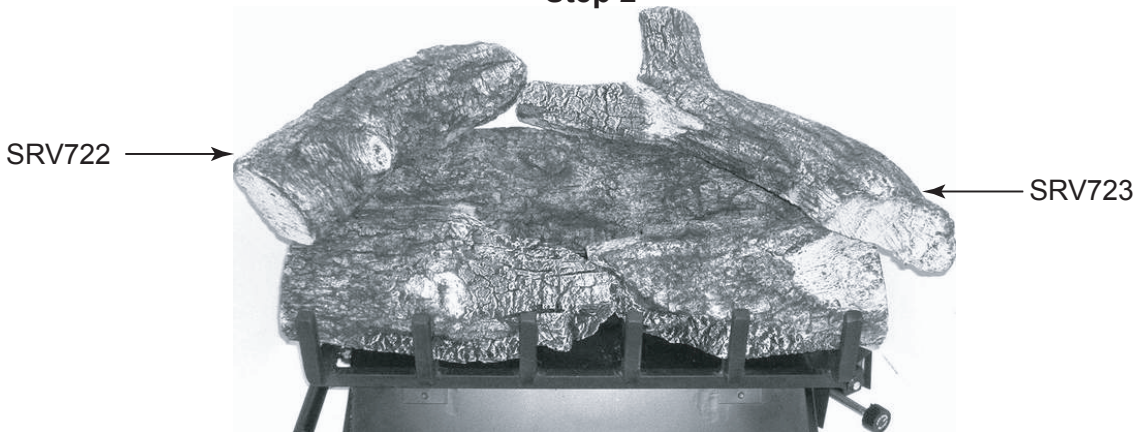


Failure to position the parts in accordance with these diagrams or failure to use only parts specifically approved with this appliance may result in property damage or personal injury.

Step 1



Step 2



Step 3



SRV727 not shown. See page 12, Step 3 for placement of log.

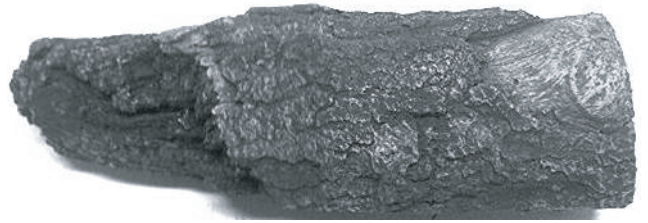
U. GO30 Grand Oak Series Logs

Open the log box and remove the paper packaging and logs.

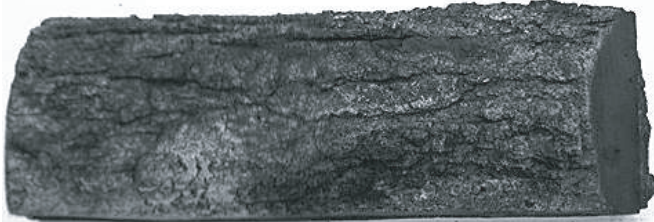
- Inspect each log for breakage that may have occurred during shipping and handling.



SRV726



SRV720



SRV721A



SRV721B



SRV722



SRV723



SRV724



SRV728



SRV740



SRV742



SRV727



SRV743

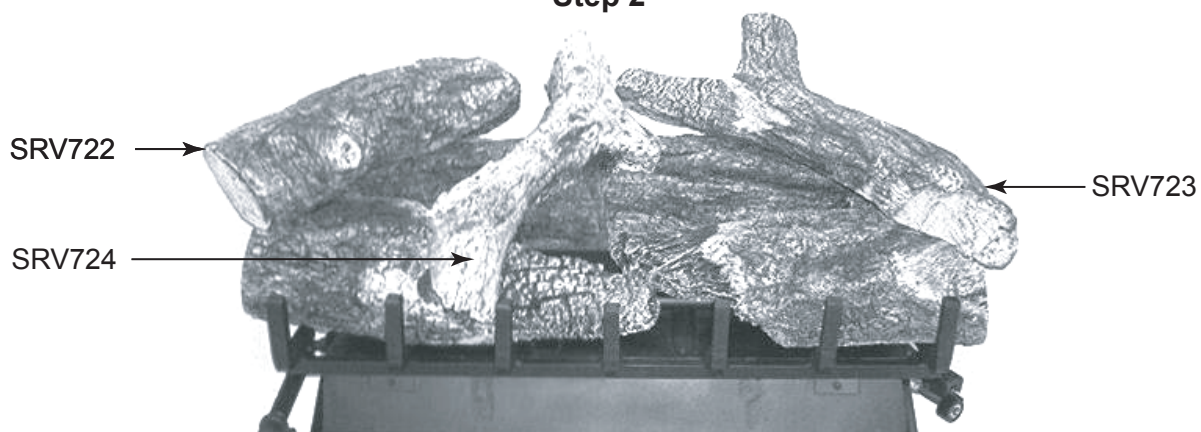
V. GO30 Grand Oak Series Log Placement Instructions

- Place logs EXACTLY as the following photos depict.

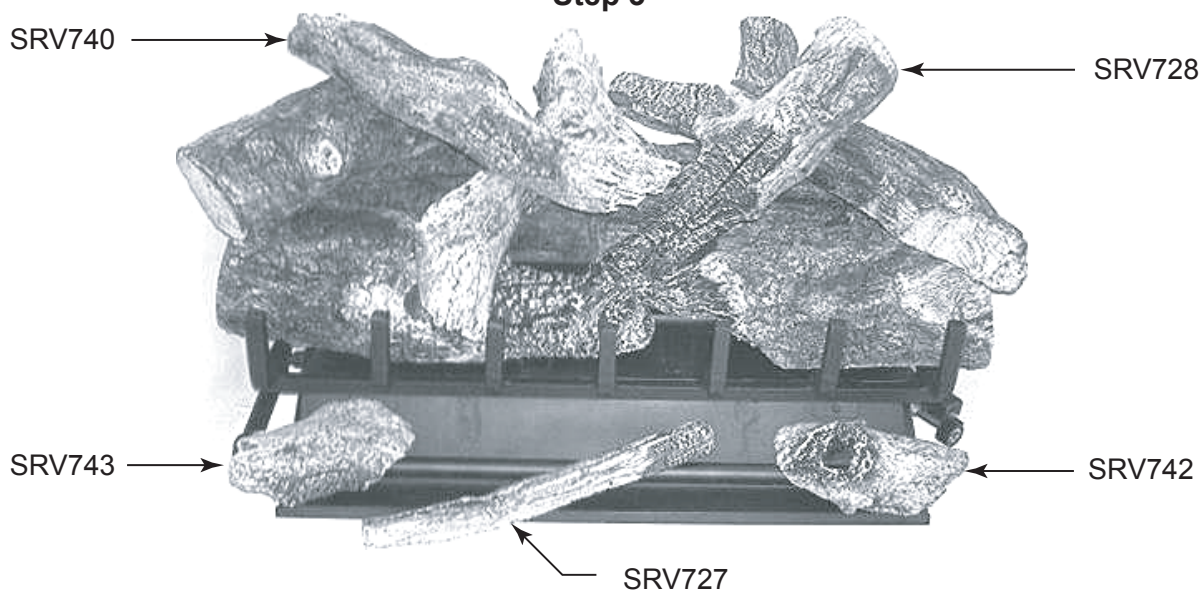
Step 1



Step 2



Step 3

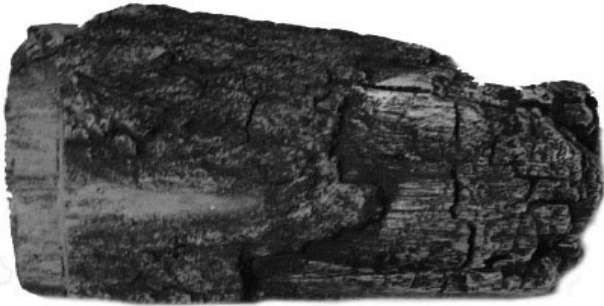


W. GO33 Grand Oak Series Logs

- Open the log box and remove the paper packaging and logs.
- Inspect each log for breakage that may have occurred during shipping and handling.



SRV637



SRV628A



SRV629A



SRV816



SRV454



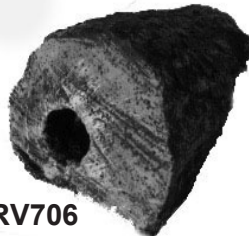
SRV75



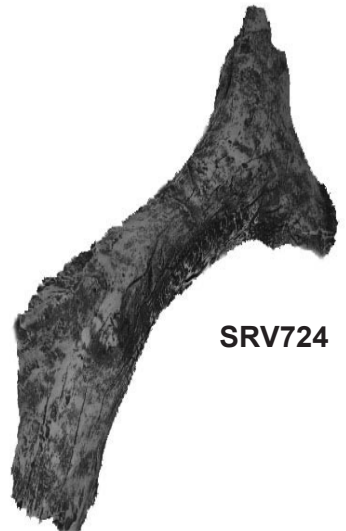
SRV707



SRV702



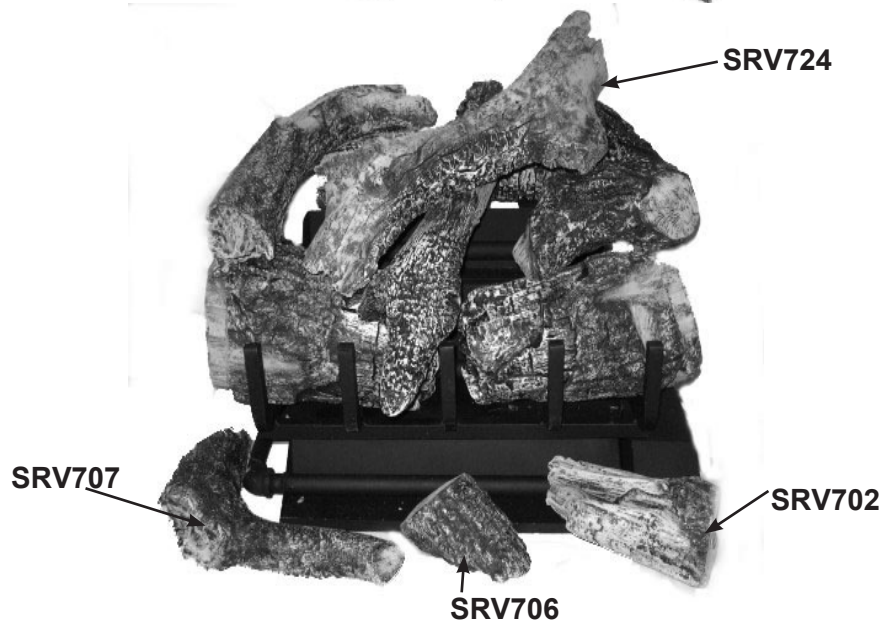
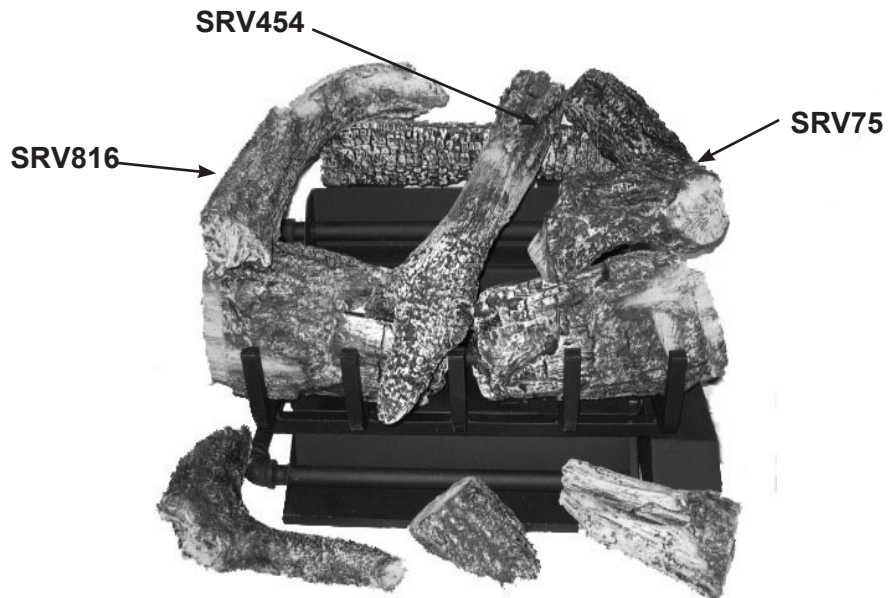
SRV706



SRV724

X. GO33 Grand Oak Series Log Placement Instructions

- Place logs EXACTLY as the following photos depict.



Y. GO35 Grand Oak Series Logs

- Open the log box and remove the paper packaging and logs.
- Inspect each log for breakage that may have occurred during shipping and handling.



SRV708



SRV709



SRV737



SRV816



SRV716



SRV728



SRV724



SRV808



SRV707



SRV702



SRV706

Z. G035 Grand Oak Series Log Placement Instructions

- Place logs EXACTLY as the following photos depict.



AA. GO40 Grand Oak Series Logs

- Open the log box and remove the paper packaging and logs.
- Inspect each log for breakage that may have occurred during shipping and handling.



SRV700



SRV701



SRV721A



SRV721B



SRV816



SRV703



SRV728



SRV724



SRV808



SRV707



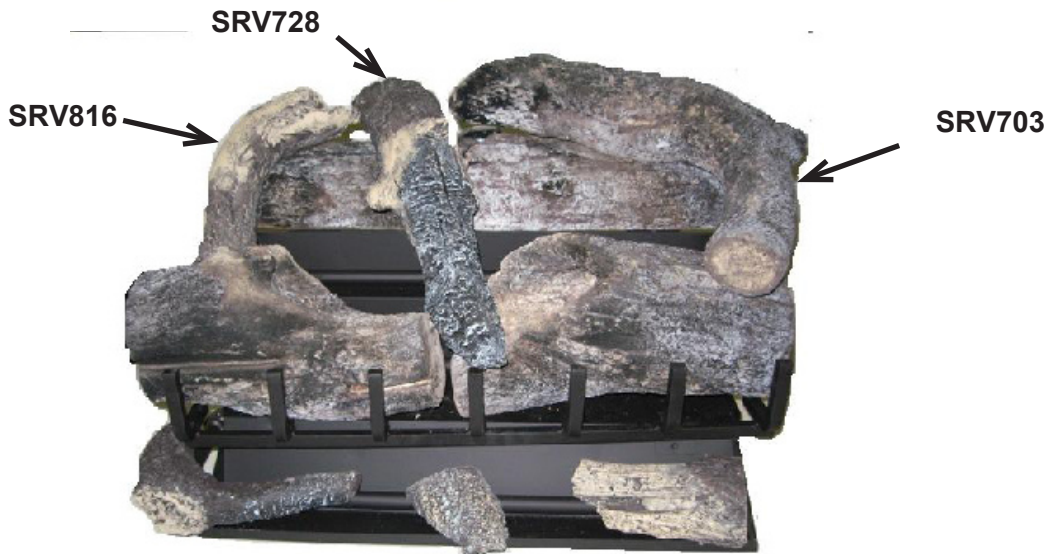
SRV702

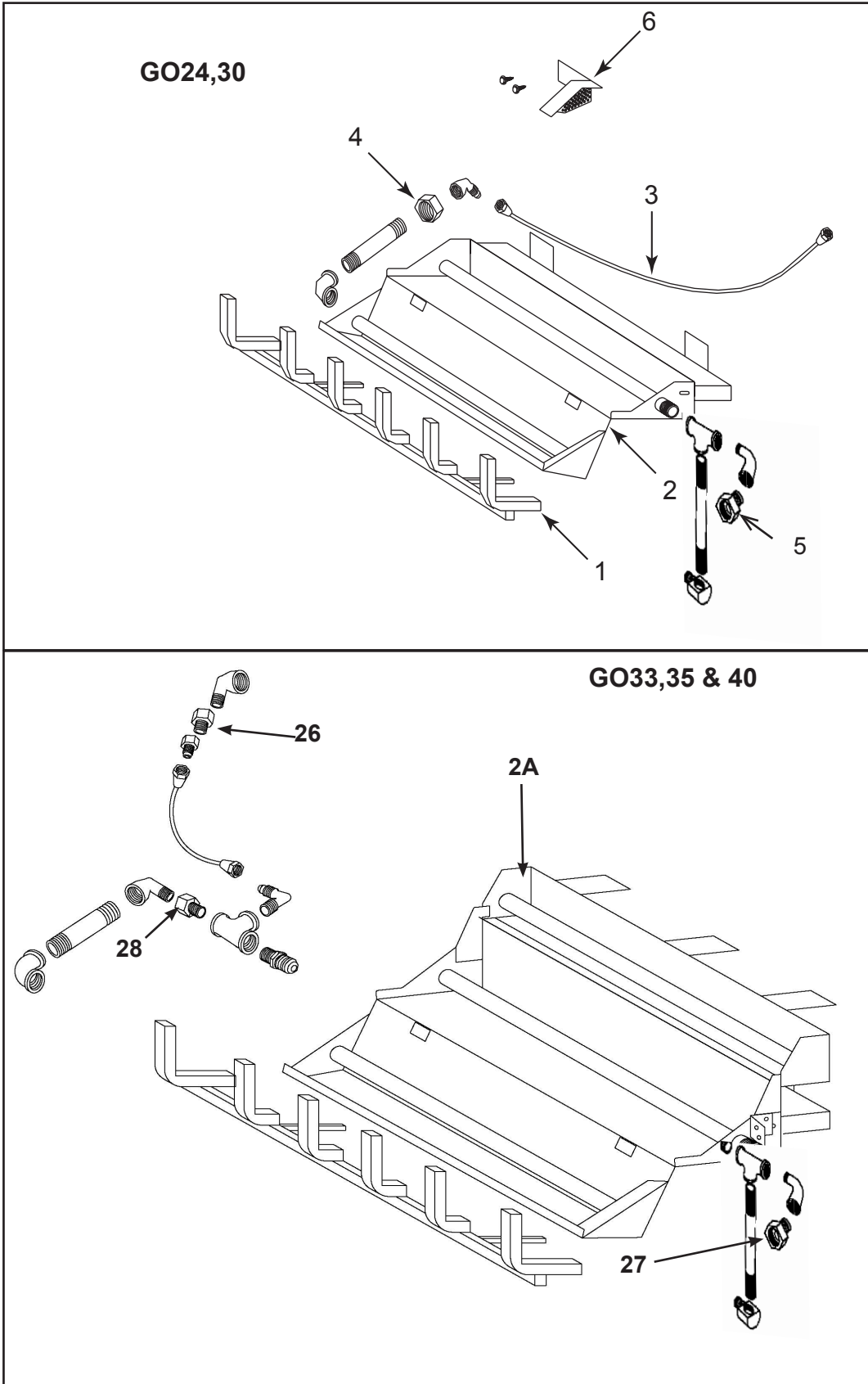


SRV706

BB. GO40 Grand Oak Series Log Placement Instructions

- Place logs EXACTLY as the following photos depict.







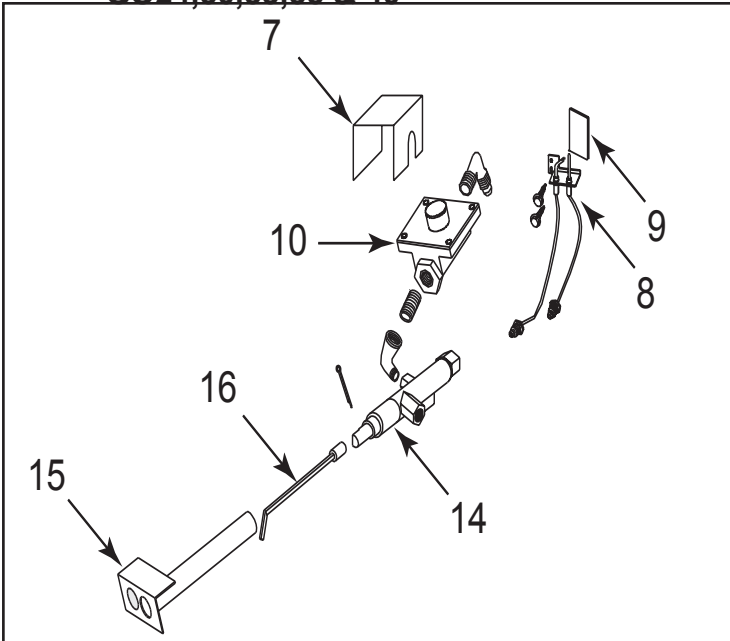
Service Parts

Exploded Parts Diagram
GO Gas Logs

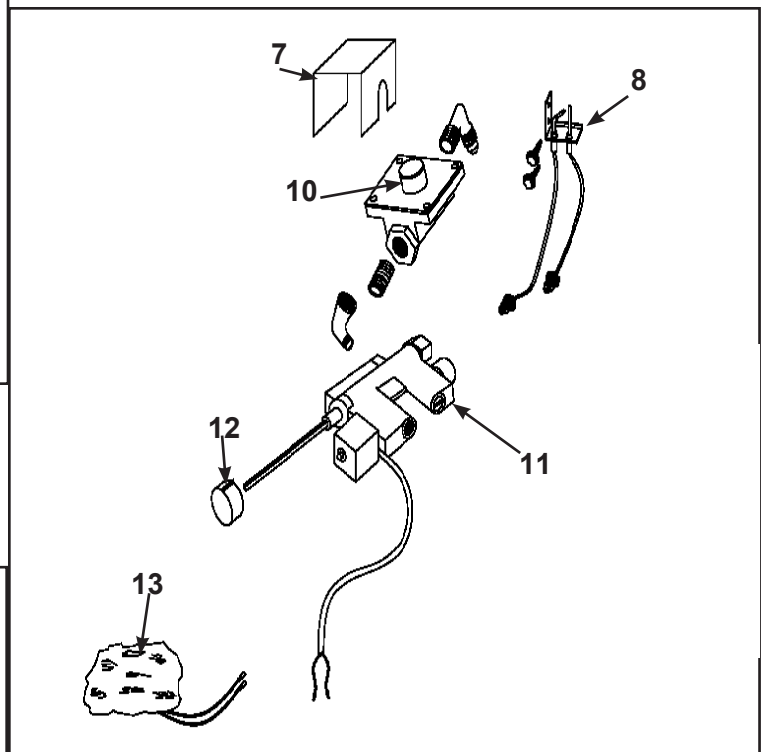
Grand Oak Gas Logs

Beginning Manufacturing Date: N/A
Ending Manufacturing Date: Active

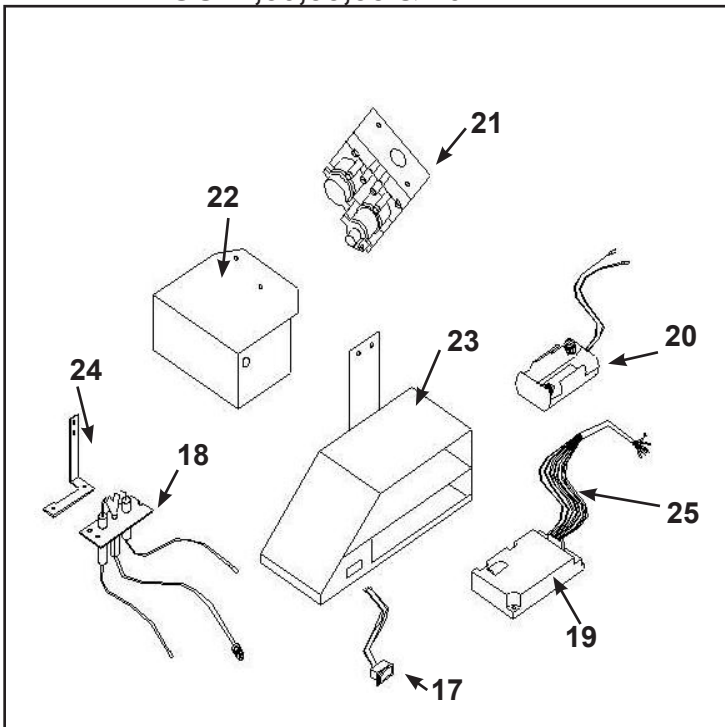
**SP Valve Assembly
GO24,30,33,35 & 40**



**REM Valve Assembly
GO24,30,33,35 & 40**



**IPI Valve Assembly
GO24,30,33,35 & 40**



#	Description of Part	GO33	GO24/35	GO30/40	Qty.
1	Grate Assembly	GR-300-18	GR-300-24	GR-300-30	1
2	Burner Pan Assembly	N/A	BPA-300-24	BPA-300-30	1
2A	Burner Pan Assembly GO35 & GO40	BPA-300-33	BPA-300-35	BPA-300-40	1
3	Connector	FT-1-18	FT-1-24	FT-1-30	1
4	Bottom Burner Orifice NG (Man/Rem 24 & 30)	N/A	BPO-2-40	BPO-2-38	1
4	Bottom Burner Orifice LP (Man/Rem 24 & 30)	N/A	AM-2-54	AM-2-52	1
4	Bottom Burner Orifice NG (IPI 24 & 30)	N/A	BPO-2-50	BPO-2-35	1
4	Bottom Burner Orifice LP (IPI 24 & 30)	N/A	AM-2-54	AM-2-53	1
5	Top Burner Orifice NG (Man/Rem 24 & 30)	N/A	BPO-2-26	BPO-2-26	1
5	Top Burner Orifice LP (Man/Rem 24 & 30)	N/A	AM-2-44	AM-2-39	1
5	Top Burner Orifice NG (IPI 24 & 30)	N/A	BPO-2-26	BPO-2-16	1
5	Top Burner Orifice LP (IPI 24 & 30)	N/A	AM-2-49	AM-2-46	1
6	Pilot Booster (LP only)	MT300-IC	MT300-IC	MT300-IC	1
7	Valve Cover	MT300-VC	MT300-VC	MT300-VC	1
8	Pilot Assy NG (SP only)	07-1008NG	07-1008-NG	07-1008-NG	1
8	Pilot Assy LP (SP & Rem Units)	07-1008-LP	07-1008-LP	07-1008-LP	1
9	Pilot Heat Pad	10-1041	10-1041	10-1041	1
	Pilot Assy (for REM Nat units only) (not shown)	09-1005	09-1005	09-1005	1
10	Regulator NG (4.0)	08-1031	08-1031	08-1031	1
10	Regulator LP (10.0)	08-1030	08-1030	08-1030	1
11	Valve (REM units only)	11-2267	11-2267	11-2267	1
12	Valve Knob (REM units only)	11-2268	11-2268	11-2268	1
13	Log Switch (REM units only)	Switch Log	Switch Log	Switch Log	1
14	Valve SP	07-1025	07-1025	07-1025	1
15	SP Handle Tube Assy	11-2110	11-2110	11-2110	1
16	SP Handle Assy	14-1019	14-1019	14-1019	1
17	Switch (IPI Unit Only)	01-1069	01-1069	01-1069	1
18	Pilot NG (IPI Unit Only)	2090-012	2090-012	2090-012	1
18	Pilot LP (IPI Unit Only)	2090-013	2090-013	2090-013	1
19	Control Module (IPI Unit Only)	593-592	593-592	593-592	1
20	Battery Holder (IPI Unit Only)	593-594A	593-594A	593-594A	1
21	Valve NG (IPI Unit Only)	593-500	593-500	593-500	1
21	Valve LP (IPI Unit Only)	593-501	593-501	593-501	1
22	Valve Bracket (IPI Unit Only)	MT-350-VC	MT-350-VC	MT-350-VC	1
23	Control Box (IPI Unit Only)	MT-350-CBA18	MT-350-CBA	MT-350-CBA	1
24	Pilot Bracket (IPI Unit Only)	MT-350-PB18	MT-350-PB3	MT-350-PB3	1
25	Wire Harness (IPI Unit Only)	593-590A	593-590A	593-590A	1
26	Top Burner Orifice NG (GO33,35 & 40 REM & MAN Valve units only)	BPO-2-40	BPO-2-24	BPO-2-10	1
26	Top Burner Orifice LP (GO33,35 & 40 REM & MAN Valve units only)	AM-2-53	AM-2-51	AM-2-51	1
26	Top Burner Orifice NG (GO33,35 & 40 IPI Valve units only)	BPO-2-40	BPO-2-24	BPO-2-10	1
26	Top Burner Orifice LP (GO33,35 & 40 IPI Valve units only)	AM-2-53	AM-2-51	AM-2-51	1



DECORATIVE GAS LOG LIMITED WARRANTY

Hearth & Home Technologies Inc. (HHT) extends the following warranty for decorative gas log sets as described herein, while it is in its location or original installation. Dealers and employees of **HHT** have no authority to make any warranty or authorize any remedies in addition to or inconsistent with the terms of this Program. This warranty gives you specific legal rights. You may also have other rights which vary from state to state.

LIMITED WARRANTY. This decorative gas log set is comprised of a gas burner assembly with safety pilot valve and ceramic logs that are manufactured by **HHT**. This Limited Warranty does not cover any part of the woodburning fireplace system in which this decorative gas appliance must be installed. This decorative gas log set is warranted to be free of defects in material and workmanship for a period of five (5) years from the date of installation. This Limited Warranty extends only to decorative gas log sets installed in the United States or Canada.

EXCLUSIONS AND QUALIFICATIONS. This Limited Warranty is subject to the following exclusions and qualifications: (1) This Limited Warranty does not apply to, and **HHT** assumes no responsibility for, any damages that result due to the installation or operation of this decorative gas log set not in accordance with both the installation instructions and operating instructions furnished. (2) The decorative gas log set must be subjected to normal use as explained in the operating instructions and the listing agency identification label attached to the burner pan assembly. This decorative gas log set is only intended to burn the fuel specified on the listing agency identification label. Use of any other fuel other than specified on the listing agency identification label can create a life threatening situation and will void this limited warranty. (3) This Limited Warranty applies only if the decorative gas log system has been installed in a vented fireplace that is suitable for burning wood. Adequate ventilation must be provided to allow proper drafting of the fireplace chimney system. **HHT** assumes no responsibility for improper performance of the decorative gas log set caused by inadequate draft due to environmental conditions (e.g. wind currents, downdrafts), tight-sealing construction of the structure, or mechanical devices (e.g. air handling devices that include forced air furnaces and air conditioning units, exhaust fans and ventilating devices), any and all of which may cause a negative pressure within the structure where the decorative gas log set is installed. (4) This Limited Warranty applies only to the components of the Appliance manufactured by **HHT**. **HHT** expressly excludes from this Limited Warranty any liability hereunder for defects or damage caused by the installation or use of any parts, devices or components that are not manufactured by **HHT**. (5) Labor costs to be paid by **HHT** pursuant to this Limited Warranty must be approved in advance of the performance of the work by **HHT** and must not exceed the retail price of the replacement part. (6) This Limited Warranty will be voided if the decorative gas log set is at any time removed or has been removed from the location in which it was originally installed. (7) Since building code requirements vary greatly throughout the United States and Canada, users of this decorative gas log set should determine in advance whether there are any building code restrictions on the installation and use of this product. **HHT** makes no representation or warranty regarding building code compliance and shall not be responsible for compliance therewith.

THERE ARE NO IMPLIED WARRANTIES OF MERCHANTABILITY OR FITNESS FOR PARTICULAR PURPOSE LIMITATION OF LIABILITY. IT IS EXPRESSLY AGREED AND UNDERSTOOD THAT HHT'S OBLIGATION AND PURCHASERS EXCLUSIVE REMEDY UNDER THIS LIMITED WARRANTY, UNDER ANY OTHER WARRANTY, EXPRESSED OR IMPLIED (INCLUDING MERCHANTABILITY AND FITNESS FOR PARTICULAR PURPOSE), OR OTHERWISE, SHALL BE LIMITED TO THE REPLACEMENT OR REPAIR OF ONLY HHT BRAND COMPONENTS AND OPTIONAL COMPONENTS AS SPECIFIED ABOVE. THE DURATION OF ANY IMPLIED WARRANTY INCLUDING MERCHANTABILITY AND FITNESS FOR PARTICULAR PURPOSE APPLICABLE TO THIS GAS APPLIANCE IS LIMITED TO THE DURATION OF THE FOREGOING WARRANTY. SOME STATES DO NOT ALLOW LIMITATIONS ON HOW LONG AN IMPLIED WARRANTY LASTS SO THE ABOVE WARRANTY MAY NOT APPLY TO YOU. IN NO EVENT SHALL HHT BE RESPONSIBLE FOR ANY INCIDENTAL OR CONSEQUENTIAL DAMAGES CAUSED BY DEFECTS IN THE DECORATIVE GAS LOG SET, WHETHER SUCH DAMAGE OCCURS OR IS DISCOVERED BEFORE OR AFTER REPLACEMENT OR REPAIR, AND WHETHER SUCH DAMAGE IS CAUSED BY HHT NEGLIGENCE. SOME STATES DO NOT ALLOW THE EXCLUSION OR LIMITATION OF INCIDENTAL OR CONSEQUENTIAL DAMAGES, SO THE ABOVE LIMITATION OR EXCLUSION MAY NOT APPLY TO YOU.

HOW TO OBTAIN SERVICE. To obtain service under this Program, you must:

1. Send written notice of the claimed condition to the Technical Service Department, Hearth & Home Technologies Inc., 1915 West Saunders Street, Mt. Pleasant, Iowa 52641.
2. Provide proof of purchase to **HHT**.
3. Provide **HHT** reasonable opportunity to investigate the claim, including reasonable opportunity to inspect the Fireplace prior to any repair or replacement work and before the Fireplace has been removed from the place of original installation.
4. Obtain **HHT's** consent to any warranty work before the work is done.

ADDITIONAL INFORMATION. If you would like information on current Hearth & Home Technologies products or want to locate a dealer in your area, visit www.hearthnhome.com.

2003 Hearth & Home Technologies Inc.

Contact Information



Please contact your **Hearth & Home Technologies** dealer with any questions or concerns.
For the number of your nearest **Hearth & Home Technologies** dealer, please call 1-800-927-6841 or 1-888-427-3973.

- NOTES -

CAUTION		
	DO NOT DISCARD THIS MANUAL	
<ul style="list-style-type: none"> • Important operating and maintenance instructions included. 	<ul style="list-style-type: none"> • Read, understand and follow these instructions for safe installation and operation. 	<ul style="list-style-type: none"> • Leave this manual with party responsible for use and operation.

This product may be covered by one or more of the following patents: (United States) 4593510, 4686807, 4766876, 4793322, 4811534, 5000162, 5016609, 5076254, 5113843, 5191877, 5218953, 5263471, 5328356, 5341794, 5347983, 5429495, 5452708, 5542407, 5601073, 5613487, 5647340, 5688568, 5762062, 5775408, 5890485, 5931661, 5941237, 5947112, 5996575, 6006743, 6019099, 6048195, 6053165, 6145502, 6170481, 6237588, 6296474, 6374822, 6413079, 6439226, 6484712, 6543698, 6550687, 6601579, 6672860, 6688302B2, 6715724B2, 6729551, 6736133, 6748940, 6748942, 6769426, 6774802, 6796302, 6840261, 6848441, 6863064, 6866205, 6869278, 6875012, 6880275, 6908039, 6919884, D320652, D445174, D462436; (Canada) 1297749, 2195264, 2225408, 2313972; (Australia) 780250, 780403, 1418504 or other U.S. and foreign patents pending.